



TETRAMCUT



改进刀具寿命 汽车空调设备零部件加工领域

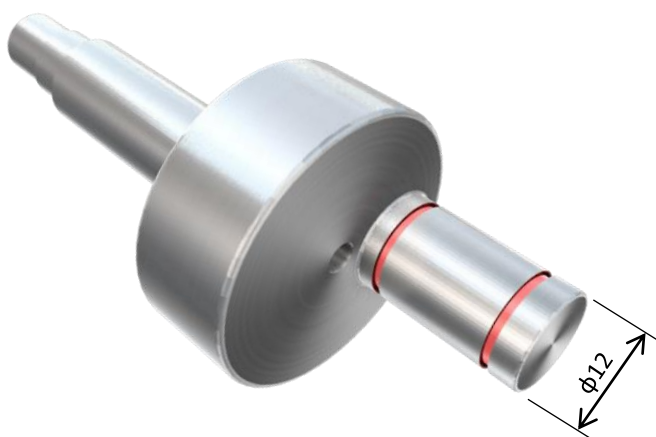
Highlight

卓越的锋利度

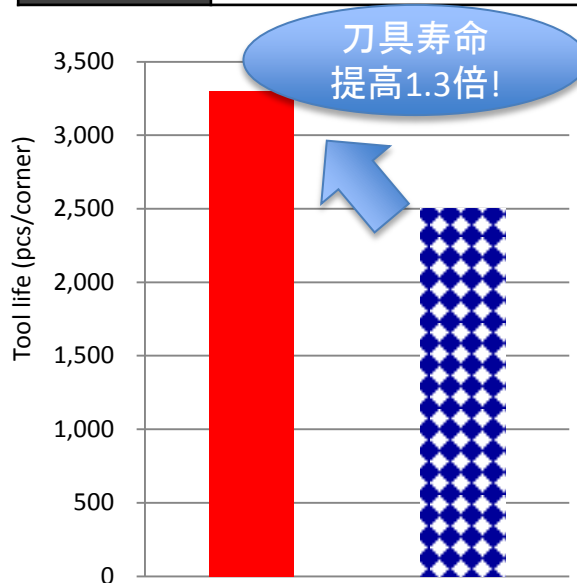
- TCP18 拥有大倾角断屑槽和锋利的切削刃, 实现比对手更佳的面加工质量。

SH725

-通过SH725 良好的耐磨损性和抗粘连性, TetraMiniCut 的寿命比竞争对手提高了130%。



| | |
|--------------------|-------------------|
| Part Name | 轴 |
| Workpiece Material | 20Cr4/SCr420(JIS) |
| Application | 切外圆槽 |
| Machine | N/C 车床 |



| | | TETRAMCUT | 竞争对手 |
|--------------------|--------------------------|-----------------|---------------|
| Tool | Toolholder | STCR2525Z18 | SMGHR2525M16 |
| | Insert | TCP18R120F-010 | SMGTR16X2120C |
| | Grade | SH725 | PVD涂层材质 |
| Cutting Conditions | Cutting speed Vc (m/min) | 90 (297 sfm) | ← |
| | Feed rate f (mm/rev) | 0.05 (.002 ipr) | ← |
| | Width of groove : W (mm) | 1.2 (.047) | ← |
| | Tool life (pcs/corner) | 3,300 | 2,500 |
| | Coolant | 乳化剂 | ← |

TETRAMCUT 竞争对手